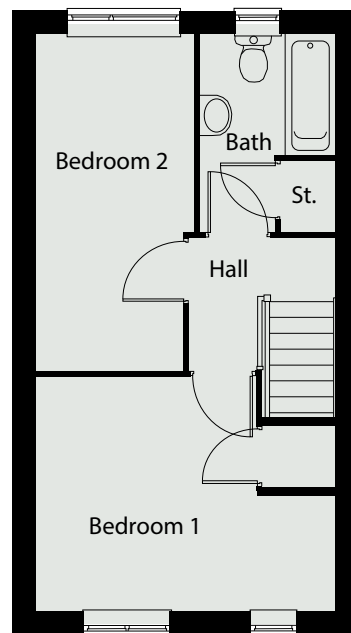
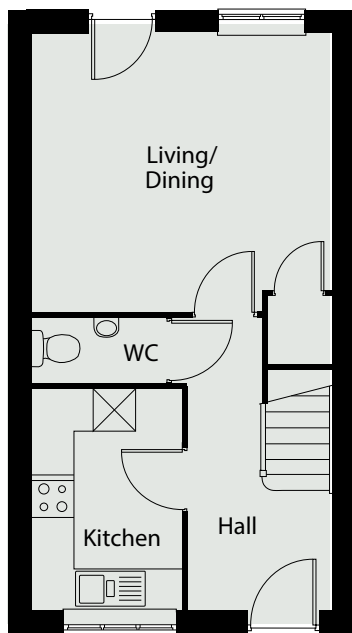


*The* FAIRACRE  
COLLECTION  
WINDRUSH PLACE

TWO BEDROOM HOUSE  
PLOTS: 468, 469 and 470



Total internal area: 68m<sup>2</sup> ~ 733ft<sup>2</sup>

Kitchen	3.13m x 2.13m	10'2" x 6'9"
Living/Dining	4.25m x 3.93m	13'9" x 12'8"
Bedroom 1	4.25m x 3.32m	13'9" x 10'8"
Bedroom 2	4.75m x 2.23m	15'5" x 7'3"



Floorplans shown are indicative only. All room sizes are approximate with maximum dimensions of finished measurements. These plans provide indicative details of the property/ies including kitchen/bathroom layouts, balconies, etc. All dimensions indicated are approximate and should not be relied upon for carpet sizes or items of furniture. The developer reserves the right to make changes to these plans prior to exchange of contracts. Indicative measurement at widest point. Plans do not highlight the gradient of outside space or location of manhole covers, sheds or paving. \*Indicates that these plots are handed.

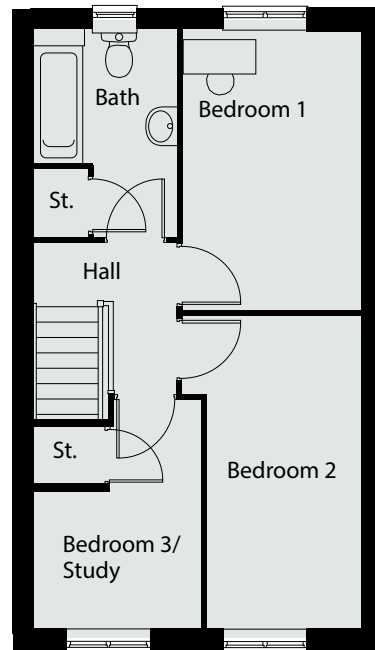
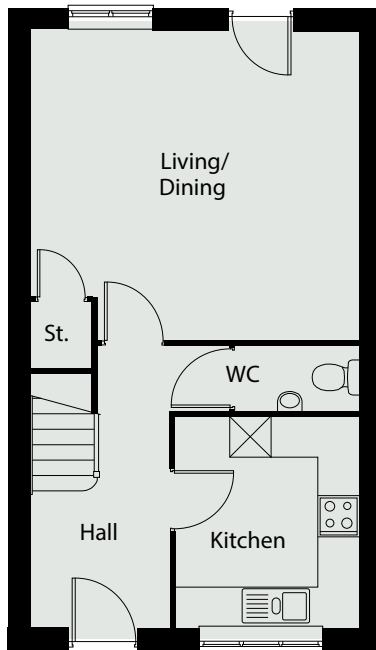
*The* FAIRACRE  
COLLECTION  
WINDRUSH PLACE



- One and two bedroom apartments
- Two bedroom house
- Three bedroom house
- Private sale

*The* FAIRACRE  
COLLECTION  
WINDRUSH PLACE

TWO/THREE BEDROOM HOUSE  
PLOTS: 455, 456, 466\* and 467\*



Total internal area: 82m<sup>2</sup> ~ 885ft<sup>2</sup>

Kitchen	3.08m x 2.68m	10'10" x 8'7"
Lounge/Dining Area	4.80m x 4.51m	15'7" x 14'8"
Bedroom 1	4.06m x 2.63m	13'3" x 8'6"
Bedroom 2	4.55m x 2.63m	14'5" x 8'6"
Bedroom 3/Study	3.33m x 2.44m	10'9" x 8'





\* Indicates that this plot is handed



Floorplans shown are indicative only. All room sizes are approximate with maximum dimensions of finished measurements. These plans provide indicative details of the property/ies including kitchen/bathroom layouts, balconies, etc. All dimensions indicated are approximate and should not be relied upon for carpet sizes or items of furniture. The developer reserves the right to make changes to these plans prior to exchange of contracts. Indicative measurement at widest point. Plans do not highlight the gradient of outside space or location of manhole covers, sheds or paving. \*Indicates that these plots are handed.

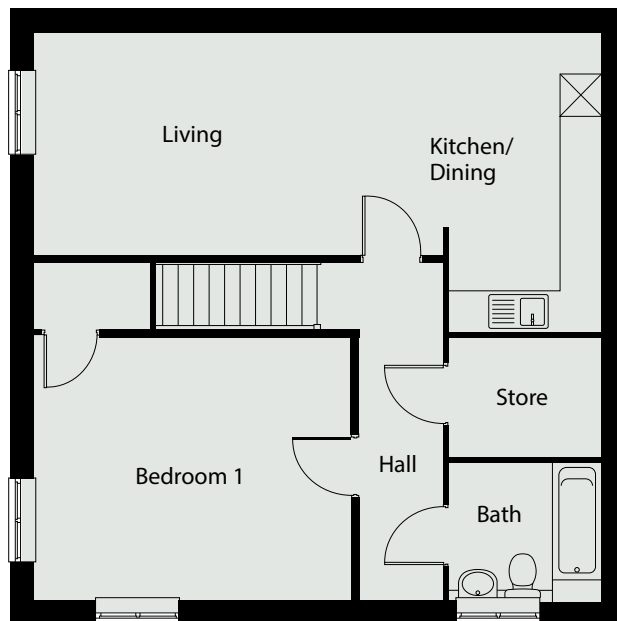
*The* FAIRACRE  
COLLECTION  
WINDRUSH PLACE



-  One and two bedroom apartments
-  Two bedroom house
-  Three bedroom house
-  Private sale

*The* FAIRACRE  
COLLECTION  
WINDRUSH PLACE

ONE BEDROOM APARTMENT  
PLOT: 440



Total internal area: 55m<sup>2</sup> ~ 592ft<sup>2</sup>





Kitchen/Living/Dining Area	8.24m x 4.33m	27' x 14'2"
Bedroom 1	4.64m x 3.85m	15'2" x 12'6"



Floorplans shown are indicative only. All room sizes are approximate with maximum dimensions of finished measurements. These plans provide indicative details of the property/ies including kitchen/bathroom layouts, balconies, etc. All dimensions indicated are approximate and should not be relied upon for carpet sizes or items of furniture. The developer reserves the right to make changes to these plans prior to exchange of contracts. Indicative measurement at widest point. Plans do not highlight the gradient of outside space or location of manhole covers, sheds or paving. \*Indicates that these plots are handed.

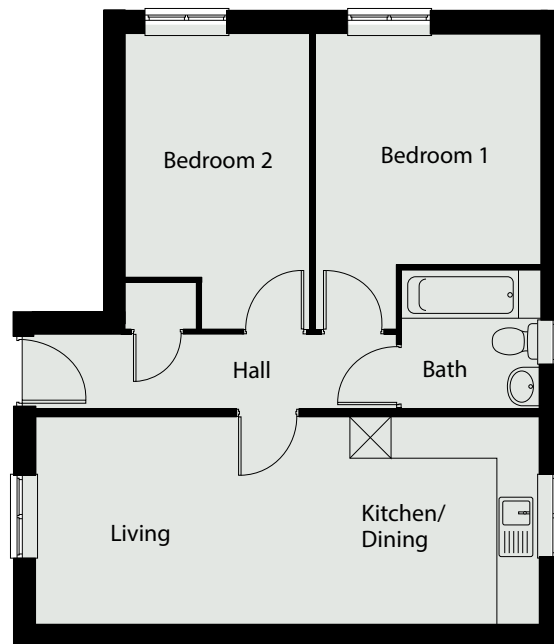
*The* FAIRACRE  
COLLECTION  
WINDRUSH PLACE



-  One and two bedroom apartments
-  Two bedroom house
-  Three bedroom house
-  Private sale

*The* FAIRACRE  
COLLECTION  
WINDRUSH PLACE

TWO BEDROOM APARTMENT  
PLOT: 441



Total internal area: 57m<sup>2</sup> ~ 613ft<sup>2</sup>





Kitchen/Living/Dining	7.34m x 3.05m	24'	x	10'
Bedroom 1	4.29m x 3.28m	14''	x	10'7''
Bedroom 2	4.29m x 2.65m	14'	x	8'6''



Floorplans shown are indicative only. All room sizes are approximate with maximum dimensions of finished measurements. These plans provide indicative details of the property/ies including kitchen/bathroom layouts, balconies, etc. All dimensions indicated are approximate and should not be relied upon for carpet sizes or items of furniture. The developer reserves the right to make changes to these plans prior to exchange of contracts. Indicative measurement at widest point. Plans do not highlight the gradient of outside space or location of manhole covers, sheds or paving. \*Indicates that these plots are handed.

*The* FAIRACRE  
COLLECTION  
WINDRUSH PLACE

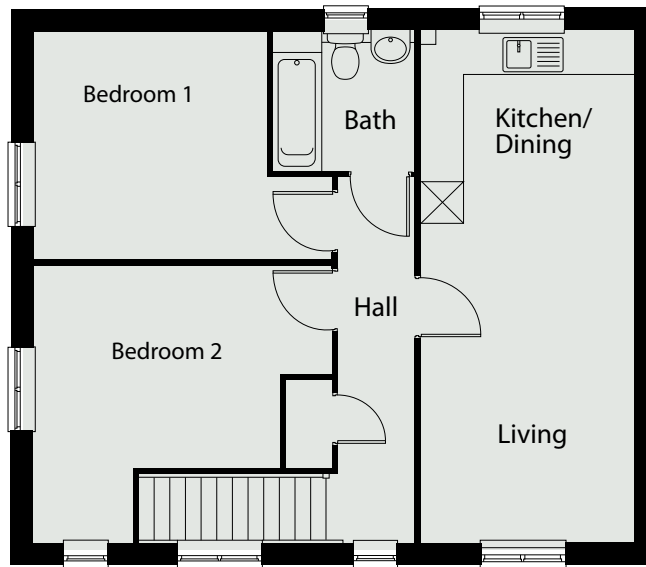


-  One and two bedroom apartments
-  Two bedroom house
-  Three bedroom house
-  Private sale



*The* FAIRACRE  
COLLECTION  
WINDRUSH PLACE

TWO BEDROOM APARTMENT  
PLOTS: 437 and 442



Total internal area: 63m<sup>2</sup> ~ 678ft<sup>2</sup>





Kitchen/Living/Dining	7.34m x 3.05m	24' x 10'
Bedroom 1	4.29m x 3.28m	14'2" x 10'7"
Bedroom 2	4.29m x 3.97m	14'2" x 13'



Floorplans shown are indicative only. All room sizes are approximate with maximum dimensions of finished measurements. These plans provide indicative details of the property/ies including kitchen/bathroom layouts, balconies, etc. All dimensions indicated are approximate and should not be relied upon for carpet sizes or items of furniture. The developer reserves the right to make changes to these plans prior to exchange of contracts. Indicative measurement at widest point. Plans do not highlight the gradient of outside space or location of manhole covers, sheds or paving. \*Indicates that these plots are handed.

*The* FAIRACRE  
COLLECTION  
WINDRUSH PLACE



-  One and two bedroom apartments
-  Two bedroom house
-  Three bedroom house
-  Private sale