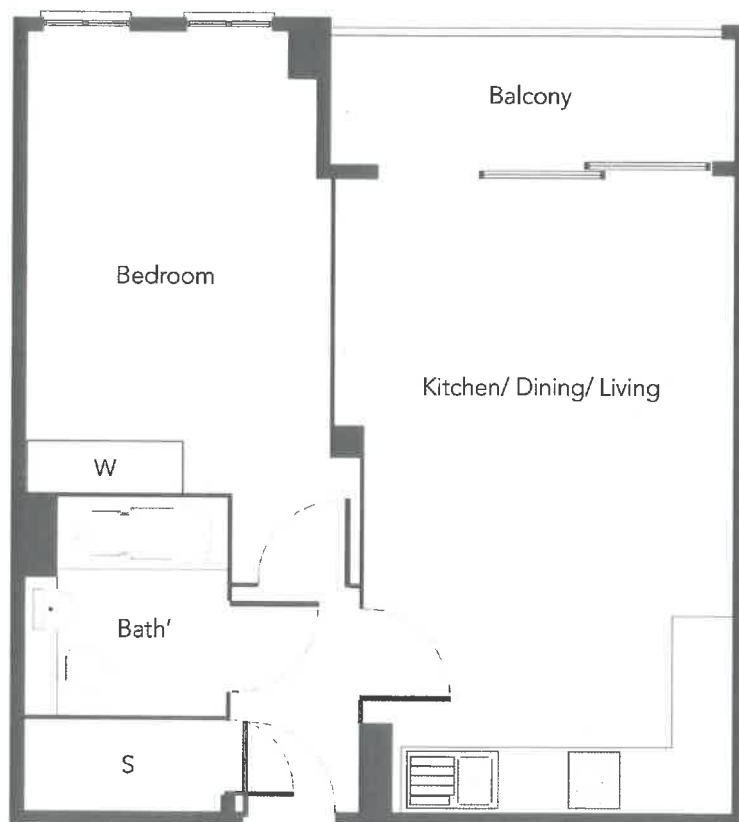
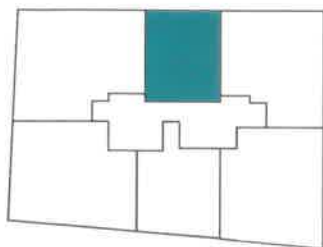


L&Q @ STRATFORD CENTRAL FLOOR PLANS

ONE BEDROOM APARTMENTS

Plots	3	9	15	21
Floors	1	2	3	4

Legacy Tower



W Wardrobe.
S Storage.

	Metric	Imperial
Kitchen/ Dining/ Living	24.20m ²	260' 5" ¹²
Bedroom	14.90m ²	160' 4" ¹²
Total	50.20m ²	540' 3" ¹²



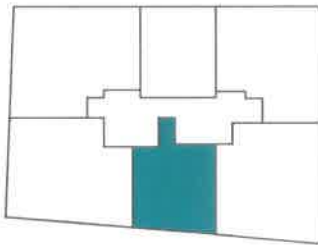
The floor plans provided are intended to only give a general indication of the proposed floor lay out and are not drawn to scale. Measurements are given to the widest point, are approximate and are given as a guide only. All measures and areas may vary within a tolerance of 5%. Do not use these measurements for carpet sizes, appliance spaces or items of furniture. Kitchen, bathroom and utility layouts may differ to build. For further clarification regarding the treatment of individual plots, please ask our Sales Advisors. Unless specifically incorporated in writing into the sales contract the specification is not intended to form part of any contract or warranty.

L&Q @ STRATFORD CENTRAL FLOOR PLANS

ONE BEDROOM APARTMENTS

Plots	6	12	18	24
Floors	1	2	3	4

Legacy Tower



W Wardrobe.
S Storage.

	Metric	Imperial
Kitchen/ Dining/ Living	21.90m ²	235' 7"²
Bedroom	12.00m ²	129' 2"²
Total	50.10m ²	539' 3"ft ²



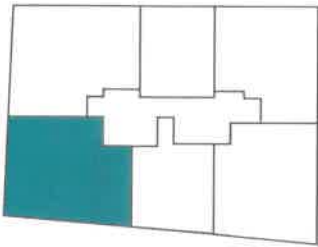
The floor plans provided are intended to only give a general indication of the proposed floor lay out and are not drawn to scale. Measurements are given to the widest point, are approximate and are given as a guide only. All measures and areas may vary within a tolerance of 5%. Do not use these measurements for carpet sizes, appliance spaces or items of furniture. Kitchen, bathroom and utility layouts may differ to build. For further clarification regarding the treatment of individual plots, please ask our Sales Advisors. Unless specifically incorporated in writing into the sales contract the specification is not intended to form part of any contract or warranty.

L&Q @ STRATFORD CENTRAL FLOOR PLANS

TWO BEDROOM APARTMENTS

Plots	1	7	13	19
Floors	1	2	3	4

Legacy Tower



W Wardrobe.
S Storage.

	Metric	Imperial
Kitchen/ Dining/ Living	31.10m ²	334' 8" ²
Bedroom 1	13.30m ²	143' 2" ²
Bedroom 2	12.00m ²	129' 2" ²
Total	80.00m ²	861' 1" ²



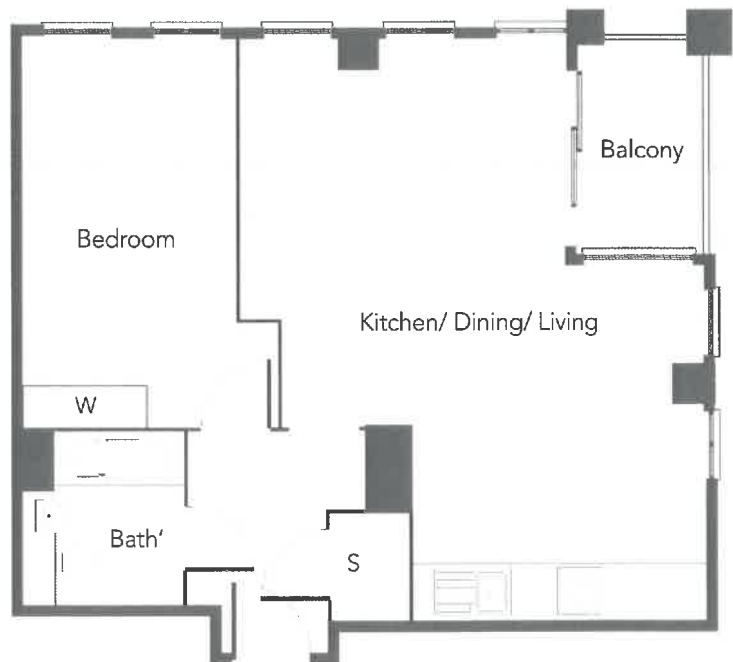
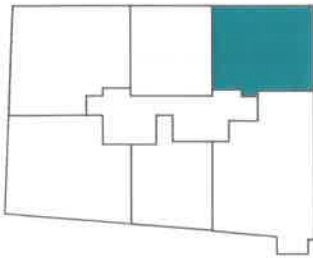
The floor plans provided are intended to only give a general indication of the proposed floor lay out and are not drawn to scale. Measurements are given to the widest point, are approximate and are given as a guide only. All measures and areas may vary within a tolerance of 5%. Do not use these measurements for carpet sizes, appliance spaces or items of furniture. Kitchen, bathroom and utility layouts may differ to build. For further clarification regarding the treatment of individual plots, please ask our Sales Advisors. Unless specifically incorporated in writing into the sales contract the specification is not intended to form part of any contract or warranty.

L&Q @ STRATFORD CENTRAL FLOOR PLANS

ONE BEDROOM APARTMENTS

Plots	10	16
Floors	2	3

Legacy Tower



- W** Wardrobe.
- S** Storage.

	Metric	Imperial
Kitchen/ Dining/ Living	33.20m ²	357' 4'' ²
Bedroom	14.20m ²	152' 8'' ²
Total	61.20m ²	658' 8'' ²



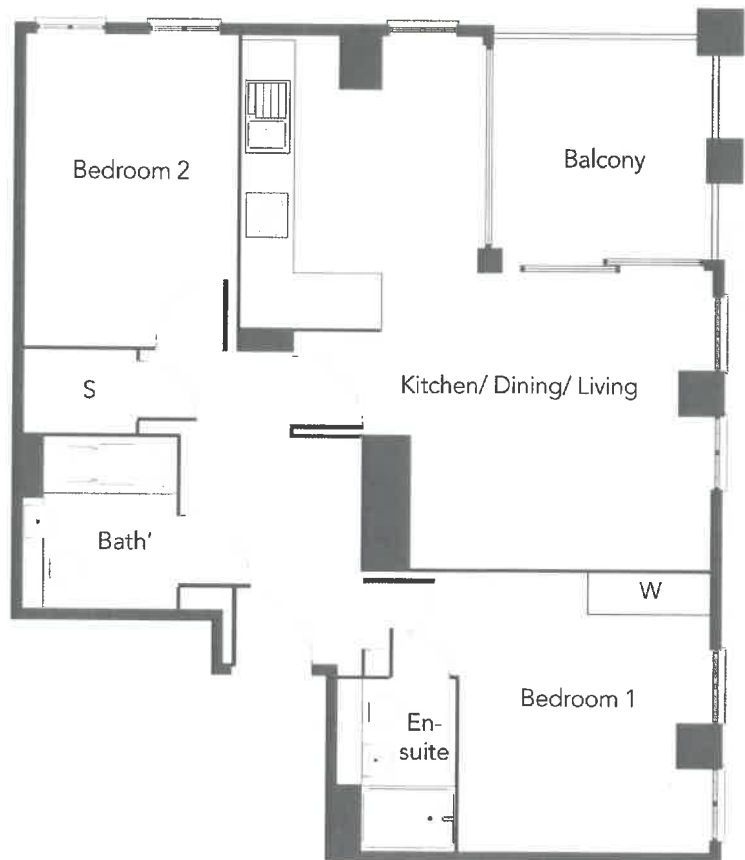
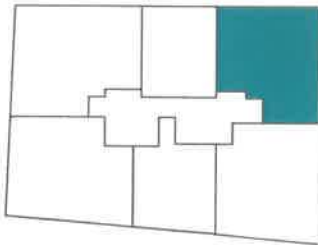
The floor plans provided are intended to only give a general indication of the proposed floor lay out and are not drawn to scale. Measurements are given to the widest point, are approximate and are given as a guide only. All measures and areas may vary within a tolerance of 5%. Do not use these measurements for carpet sizes, appliance spaces or items of furniture. Kitchen, bathroom and utility layouts may differ to build. For further clarification regarding the treatment of individual plots, please ask our Sales Advisors. Unless specifically incorporated in writing into the sales contract the specification is not intended to form part of any contract or warranty.

L&Q @ STRATFORD CENTRAL FLOOR PLANS

TWO BEDROOM APARTMENTS

Plots	4	22
Floors	1	4

Legacy Tower



W Wardrobe.
S Storage.

	Metric	Imperial
Kitchen/ Dining/ Living	26.40m ²	286' 3" ²
Bedroom 1	12.50m ²	134' 5" ²
Bedroom 2	10.80m ²	116' 3" ²
Total	71.30m ²	767' 5" ²



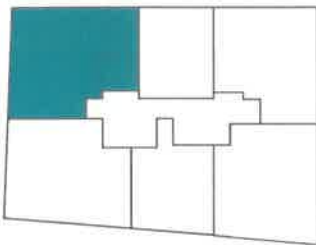
The floor plans provided are intended to only give a general indication of the proposed floor lay out and are not drawn to scale. Measurements are given to the widest point, are approximate and are given as a guide only. All measures and areas may vary within a tolerance of 5%. Do not use these measurements for carpet sizes, appliance spaces or items of furniture. Kitchen, bathroom and utility layouts may differ to build. For further clarification regarding the treatment of individual plots, please ask our Sales Advisors. Unless specifically incorporated in writing into the sales contract the specification is not intended to form part of any contract or warranty.

L&Q @ STRATFORD CENTRAL FLOOR PLANS

TWO BEDROOM APARTMENTS

Plots	2	8	14	20
Floors	1	2	3	4

Legacy Tower



W Wardrobe.
S Storage.

	Metric	Imperial
Kitchen/ Dining/ Living	36.20m ²	389' 7" ²
Bedroom 1	15.70m ²	169' 0" ²
Bedroom 2	12.10m ²	146' 4" ²
Total	85.60m ²	921' 4" ²



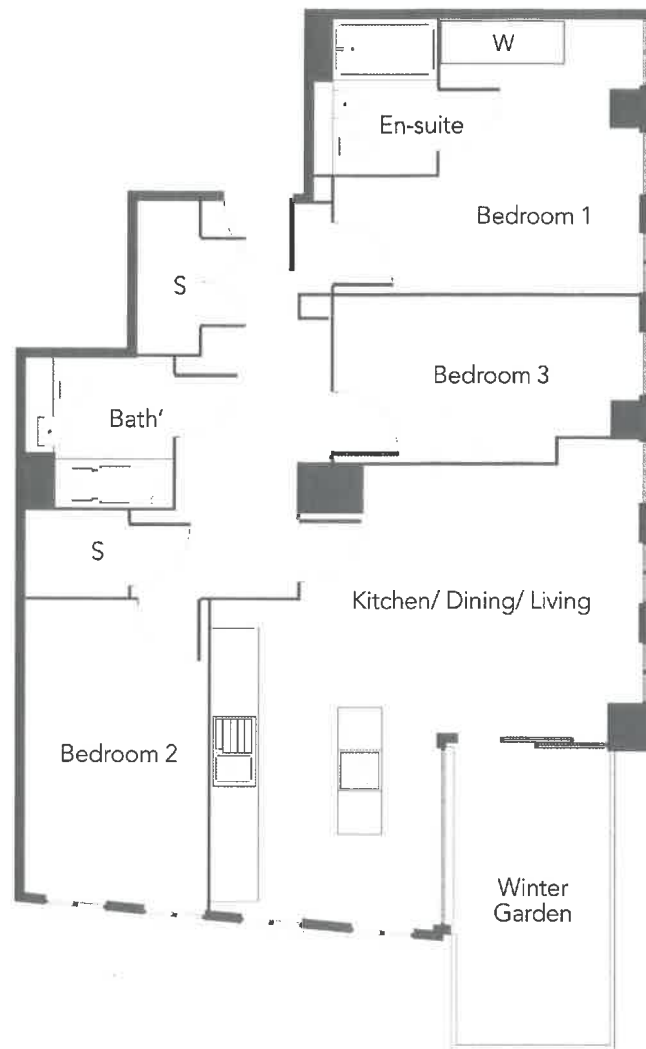
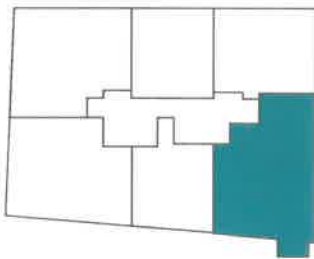
The floor plans provided are intended to only give a general indication of the proposed floor lay out and are not drawn to scale. Measurements are given to the widest point, are approximate and are given as a guide only. All measures and areas may vary within a tolerance of 5%. Do not use these measurements for carpet sizes, appliance spaces or items of furniture. Kitchen, bathroom and utility layouts may differ to build. For further clarification regarding the treatment of individual plots, please ask our Sales Advisors. Unless specifically incorporated in writing into the sales contract the specification is not intended to form part of any contract or warranty.

L&Q @ STRATFORD CENTRAL FLOOR PLANS

THREE BEDROOM APARTMENTS

Plots	11	17
Floors	2	3

Legacy Tower



W Wardrobe.
S Storage.

	Metric	Imperial
Kitchen/ Dining/ Living	29.00m ²	312' 2" ²
Bedroom 1	13.40m ²	144' 2" ²
Bedroom 2	9.70m ²	104' 4" ²
Bedroom 3	11.10m ²	119' 5" ²
Total	96.50m ²	1038' 7" ²



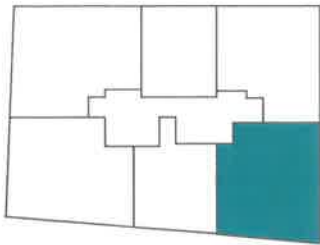
The floor plans provided are intended to only give a general indication of the proposed floor lay out and are not drawn to scale. Measurements are given to the widest point, are approximate and are given as a guide only. All measures and areas may vary within a tolerance of 5%. Do not use these measurements for carpet sizes, appliance spaces or items of furniture. Kitchen, bathroom and utility layouts may differ to build. For further clarification regarding the treatment of individual plots, please ask our Sales Advisors. Unless specifically incorporated in writing into the sales contract the specification is not intended to form part of any contract or warranty.

L&Q @ STRATFORD CENTRAL FLOOR PLANS

TWO BEDROOM APARTMENTS

Plots	5	23
Floors	1	4

Legacy Tower



W Wardrobe.
S Storage.

	Metric	Imperial
Kitchen/ Dining/ Living	27.30m ²	293' 9" ²
Bedroom 1	14.50m ²	156' 1" ²
Bedroom 2	16.60m ²	178' 7" ²
Total	78.40m ²	843' 9" ²



The floor plans provided are intended to only give a general indication of the proposed floor lay out and are not drawn to scale. Measurements are given to the widest point, are approximate and are given as a guide only. All measures and areas may vary within a tolerance of 5%. Do not use these measurements for carpet sizes, appliance spaces or items of furniture. Kitchen, bathroom and utility layouts may differ to build. For further clarification regarding the treatment of individual plots, please ask our Sales Advisors. Unless specifically incorporated in writing into the sales contract the specification is not intended to form part of any contract or warranty.