

at **Lansbury Square**

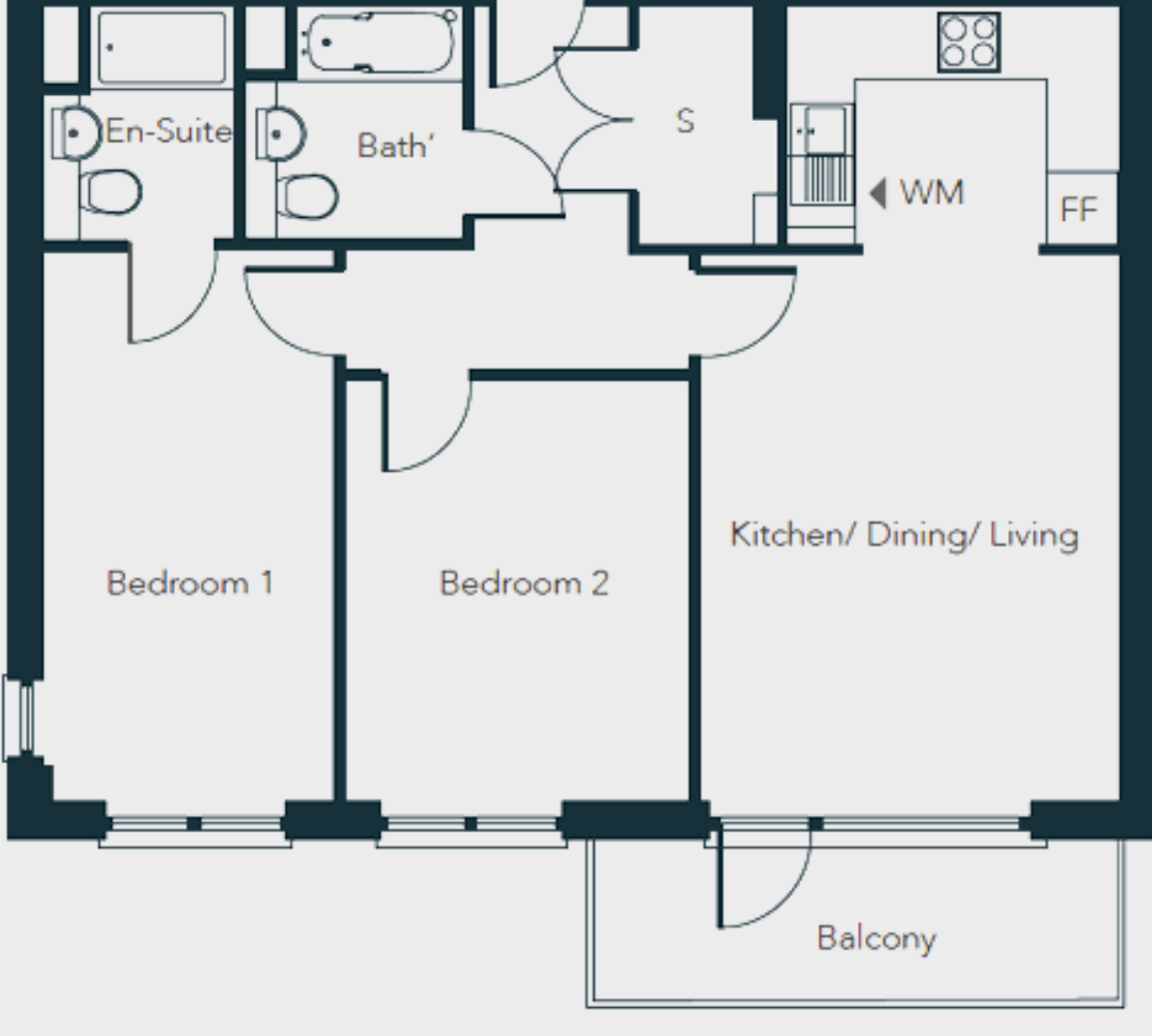
SHARED OWNERSHIP



DISCOVER OUR TWO BEDROOM APARTMENT

FROM £124,375*

Designed to maximise on space, this timeless two bedroom apartment embodies the perfect London home. Conveniently based on the first floor, enjoy the simple layout and generous amenities on offer.



KEY FEATURES

- ✔ Move-in ready
- ✔ Up to 74 m² of lateral space
- ✔ Ensuite to master bedroom
- ✔ Access to on-site gym
- ✔ Concierge service
- ✔ Private balcony
- ✔ £12,438 deposit required

LARGE ON-SITE RESIDENTS GYM



CONCIERGE SERVICE

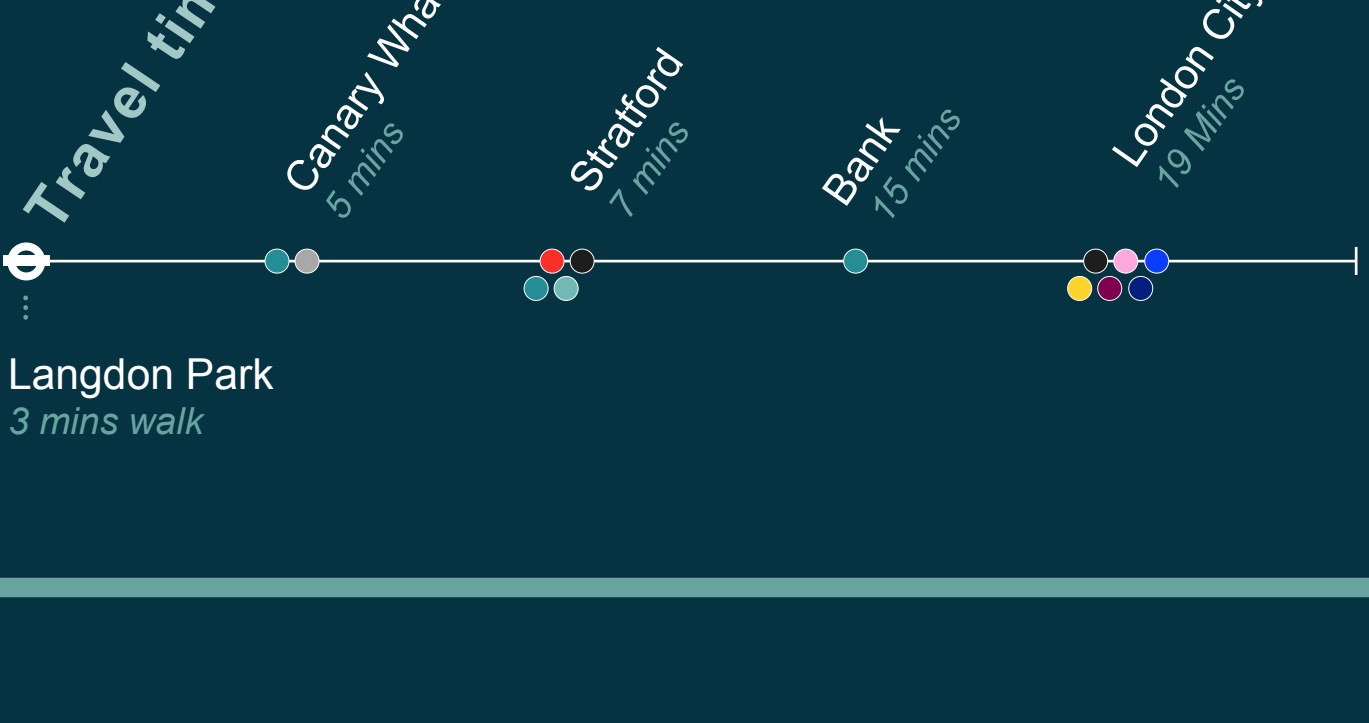


Competitively priced and complemented with high quality interiors, this two bedroom apartment is a rare find for London, and won't be available for long.

HIGH SPECIFICATION THROUGHOUT



Based only minutes away from Langdon Park DLR, you have access to London's largest Employment Hubs, with Canary Wharf only 5 minutes away, and Bank station just a quick 15 minutes by train.



We are down to our final few homes at our exclusive Lansbury Square development. Enquire today and receive more information regarding pricing, floor plans and availability.

DISCOVER MORE

Contact Redloft today and organise a viewing at your future home at Lansbury Square.

020 7539 3745
Sales@redloft.co.uk